

Community Development



Our Responsibility

Kinross has a responsibility to contribute to local community development. We believe that a responsibly managed mining operation will lead to positive community development outcomes, measured through improved well-being. Well-being “comprises all the various evaluations, positive and negative, that people make of their lives, and the affective reaction of people to their experiences.” (World Health Organization).

Our Commitment

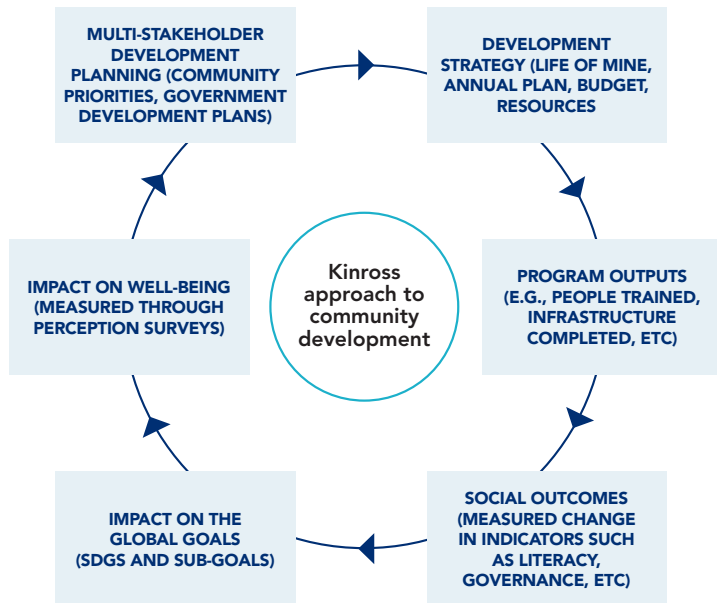
We are committed to a participative and collaborative process with local communities and other stakeholders within the framework of a long-term relationship. Through respect, listening and ensuring an equal balance of power we are committed to gaining mutual understanding, thereby supporting the community’s development priorities.

Our Approach

The Kinross approach to community development is to leverage the positive social and economic benefits generated in communities over the life of the mine, realized through the mine’s benefit footprint (BFP). The BFP measures expenditure on employment, procurement and taxes at the local, regional, and national levels. A life of mine strategic approach must be developed through a multi-stakeholder participative process in which the community sets out its vision and priorities. We promote an inclusive approach which considers vulnerable groups and a long-term perspective which recognizes the estimated life of mine and eventual closure. Where possible, we propose alignment of local plans with existing government development plans to ensure the strengths of different actors are leveraged. We attempt to measure the outcomes of our contribution to development through socio-economic studies and frameworks such as the [Devonshire Initiative’s Beyond Zero Harm](#). In addition and where possible, we connect these outcomes to social impact through the global goals (SDGs). Finally, we use perception studies to measure how people value and perceive the effect on their personal well-being. We recognize that the economic output of a mine compared to that of the local community, varies significantly across our operating locations. This affects what development outcomes may or may not be measurable.

Our goal is that this collaborative approach to community development contributes to growing trust between the company and the community, demonstrating a productive relationship.

Responsibility for our Community Development programs is with General Managers at the site level. At the corporate level, accountability resides with the Vice-President, Community Relations and the Senior Vice-President, Safety and Sustainability. Performance is reported to the Chief Technical Officer while governance and oversight are with the Corporate Responsibility and Technical Committee (CRTC) of the Board of Directors.



 To learn more about our community development, see our most recent [Sustainability Report](#).